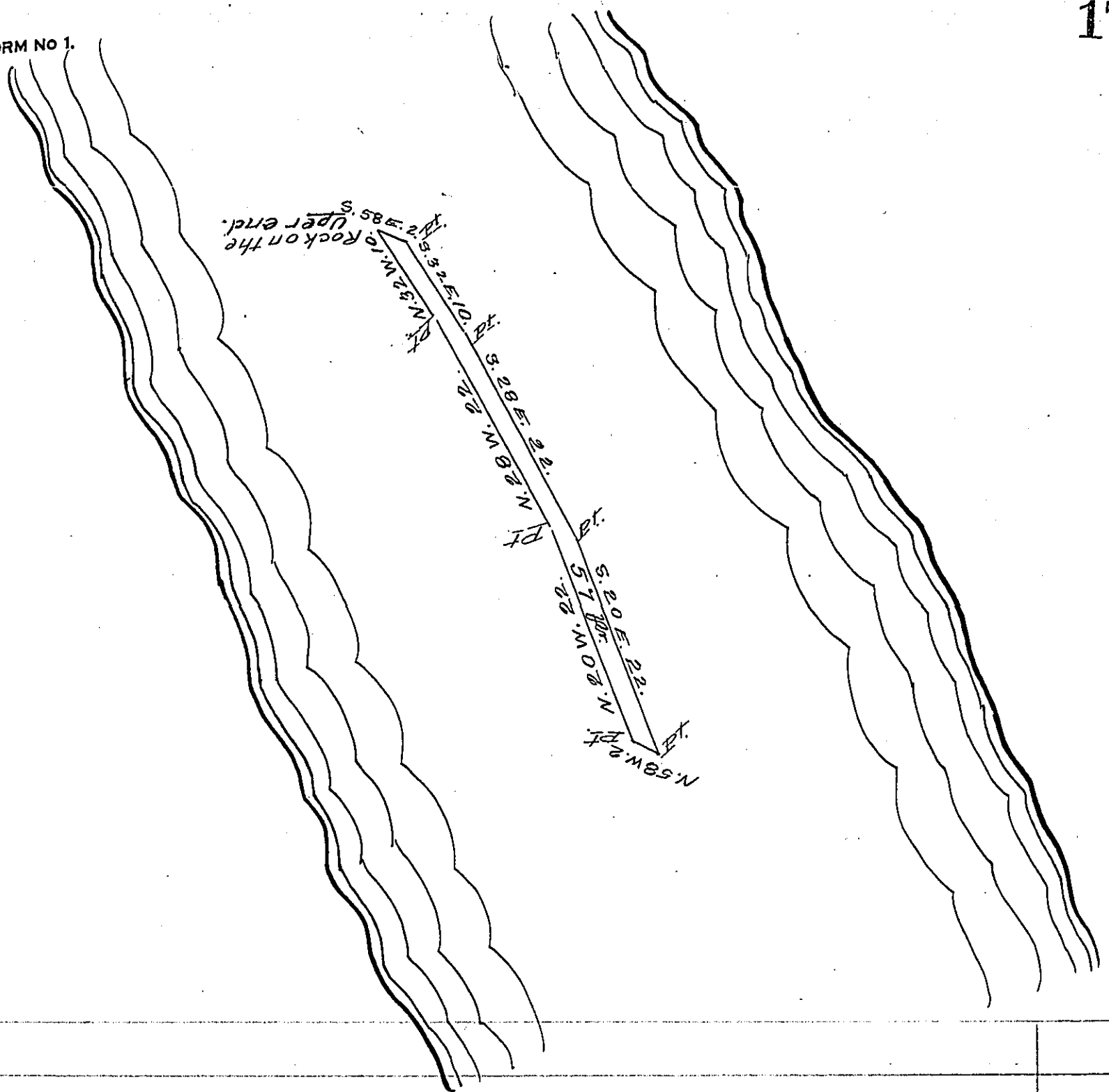


FORM NO 1.



A Draught of a small Island situate in the River Susquehanna, near Dritt's & Whistler Island known by the Name of Burch Island containing 57 $\frac{1}{2}$ Acs in the County of Lancaster, Surveyed unto Christian Whistler, By Virtue of a Warrant Dated ye Sixth Day of September A. D. 1804.

PT. H. REAM D.S.
 To Samuel Cochran Esq^r & Saml. Ensminger D.S.
 Surveyor General. November the 24th 1806.

IN TESTIMONY that the above is a copy of the original remaining on file in the Department of Internal Affairs of Pennsylvania, made conformably to an Act of Assembly approved the 16th day of February, 1833, I have hereunto set my Hand and caused the Seal of said Department to be affixed at Harrisburg, this fifteenth day of April 1907.

Geo. C. B. Brown
 Secretary of Internal Affairs.